

CONSTRUCTION DETAILS



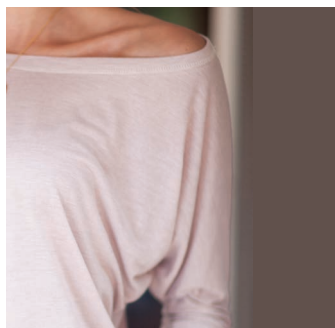
Ringer

A t-shirt with a solid body featuring a ribbed crew neck and sleeve bands in a contrasting color.



Racerback

A type of tank that is cut to reveal the wearer's shoulders and shoulder blades, making a T-shaped back.



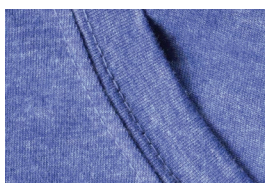
Dolman

A women's garment with sleeves cut in one piece with the body of the garment.



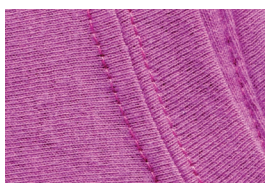
Raglan Sleeve

A style of sleeve extending to the collar of a garment instead of ending at the shoulder, sewn with diagonal seams.



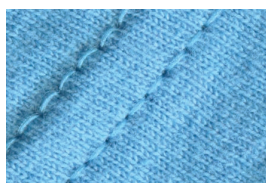
Self-Collar

A collar that is constructed from the same material as the garment.



Rib Collar

A collar constructed of rib knit fabric with vertical rows of raised ridges. Features more elasticity than a self-collar.



Double-Needle Hem

A double row of stitching at the hemline.



Shoulder-to-Shoulder Taping

Shoulder seams as well as the neck seam are covered by fabric tape or binding, to reinforce this area and reduce separation.



Set-in Sleeve

A style of sleeve sewn into the shoulder seam. The seam is curved to accommodate fit and is connected to the shoulder seam and side seam as opposed to diagonal from the neck, as in raglan sleeves.

DYES

Garment-Dyed

Apparel that is dyed in garment form rather than in raw fabric form, that fades over washing, giving the garment a vintage look. It is a flexible and useful type of dyeing, as batches can be done in custom colors and in various quantities from small to large.

Reactive Dye

Fabric dye that forms chemical bonds with the fabric, promoting color fastness, allowing the fabric to withstand sunlight and laundering without fading or running during the normal life of the garment.

FABRICS

Burnout

A chemical process where cotton fibers dissolve, leaving polyester fibers intact, creating a semi-transparent design.

Denier

Measures density of fabric, used to describe polyester. The smaller the number of denier, the thinner the strand of polyester, the larger the number, the thicker the strand.

Fleece

A thicker fabric in which the pile on the underside is cut and brushed, resulting in a soft hand.

French Terry

A terry fabric identified by uncut loops on one side and a smooth surface on the other.

Jersey Knit

A soft knitted fabric with a smooth finish, most commonly used to make a t-shirt.

Mesh

A loosely woven or knitted fabric made of 100% polyester that has a number of closely spaced holes. Frequently used for sports jerseys as it is extra-breathable, and provides superior color fastness without shrinkage.

Modal

A type of rayon made from beech wood fibers. Soft, smooth, breathes and drapes well, keeps its shape and is resistant to shrinkage, fading and pilling. Very absorbent with the ability to dye easily.

Piqué

A weaving style that is characterized by raised parallel cords creating a textured surface similar to a waffle weave.

Poly-Cotton

An ultra-soft blend of cotton and polyester that is finer than a traditional 100% cotton and has superior draping.

Rayon

A manufactured fiber derived from plants. It is found in products where soft, smooth surfaces and luster are important.

Rib Knit

A form of knit fabric with vertical rows of knitting loops. This fabric features more elasticity than jersey knit and is commonly used in crew necks, cuffs, etc.

Sponge Fleece

An exceptionally plush, soft and squishy fabric fleece, usually made of a blend including polyester and rayon.

Spun Polyester

A medium weight fabric that looks and feels like cotton, but is made by spinning 100% polyester fibers into yarns.

Tri Blend

A fabric blend of cotton, polyester and rayon lending superior softness and a flattering drape.